




# Chapter 10 Program Page

## 10.1 Create a new Program Page

Click on “New program page ”button  and select “Add Step” or “Add Universal Display”, as shown in image 10-1and 10-2 in below.

There are two kinds of program pages. One is normal program page we called it Step  Add Step, which is the main component of a program. There will be many normal program pages and they will be played in order, that is, one after another. Another

we called it Universal program page  Add Universal Display, usually this program has fixed content, such like clock, company logo and so on.

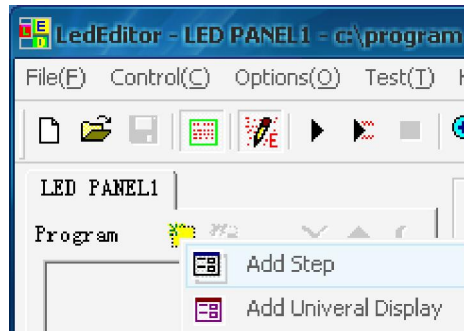


Figure 10-1

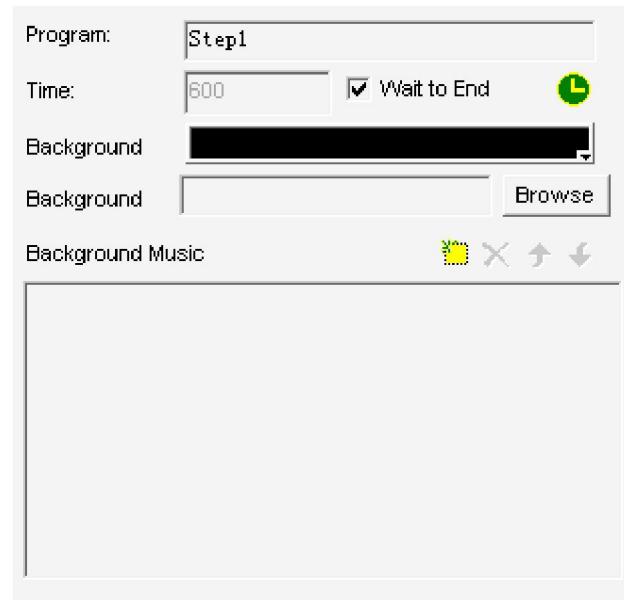


Figure 10-2

## 10.2 Setup Program Page

As shown in image 10-2, the upper part is for setting up properties.

Name: name of program page

Time ( second ) : Set up how long the program page will last and then play the next one.

Waiting for end: After all windows in this step played then play the next one.



Button: Program schedule

Background: Set up background color

Background picture: import background picture

Background music: import background music. If there are videos in program page, it will give priority to sound of video.

# 10.3 Program Schedule Option for program page

Schedule options as shown in image 10-3, which include valid time, date and others.

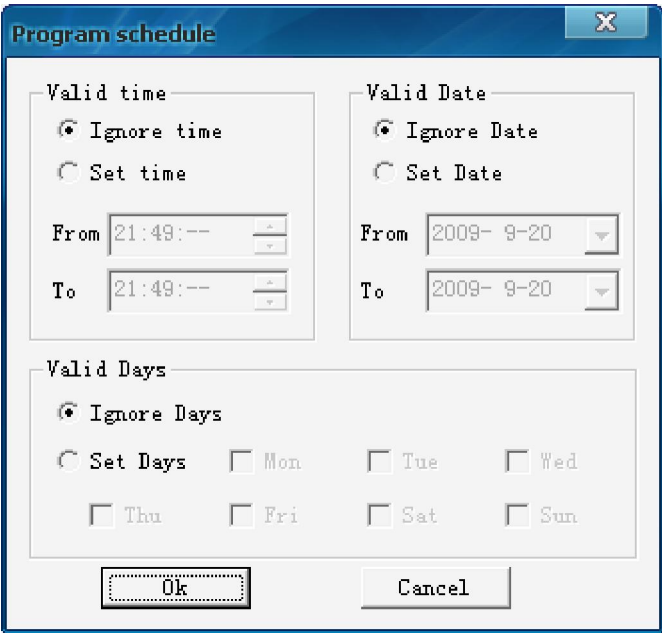


Figure 10-3

Timing program page is different with normal program page, as shown in image 10-4.



Figure 10-4